

Thermo Scientific
Wellwash and Wellwash Versa
Microplate Strip Washers



Easy washing for reliable ELISA results

- convenience • versatility • security

Thermo
SCIENTIFIC

Thermo Scientific™ Wellwash™ and Wellwash Versa – Ease of use, convenience and versatility for washing microplates in ELISA assays

The Thermo Scientific Wellwash and Wellwash Versa are easy-to-use strip washers for 96-well plates that offer convenience through a graphical user interface, nine language versions and a USB port.

The Wellwash is the basic model for washing 96-well plates. It is intended for use when only a few similar assays are run routinely. The Wellwash Versa is the advanced model for 96-well plates which can also wash cells and 384-well plates, offering enhanced flexibility needed for research use.

Thermo Scientific Wellwash and Wellwash Versa offers

- Easy set-up of wash protocols through a large color screen and a visual user interface
- Convenience with internal software available in nine languages: English, French, German, Italian, Spanish, Portuguese, Russian, Japanese, and Chinese
- A USB port for transferring protocols between several washers and for printing reports and log files
- A sweep mode to guarantee an extremely low residual volume in the well, resulting in excellent washing performance and reliable assay results
- Adjustable wash parameters, such as dispense and aspiration height and the aspiration speed for optimal washing performance

In addition Wellwash Versa offers

- Wide selection of wash heads for 96-well plates and 1 x 16 wash head for 384-well plates
- Specially designed 2 x 8 cell wash head for gentle washing of cells in a 96-well plate
- Two wash bottles and one rinse bottle for increased flexibility
- Possibility to connect to automation systems

Easy and convenient to use

The large color screen makes the Thermo Scientific Wellwash and Wellwash Versa very easy and convenient to use. The user interface is logical and intuitive, requiring minimal training so that protocols can be developed quickly. Ready made demo protocols and a context-sensitive help feature is included in both instruments. The internal software is available in nine languages (English, French, German, Spanish, Italian, Portuguese, Russian, Japanese, and Chinese) adding more convenience of use.

Color-coded tube fittings and liquid level sensor cables enable fast instrument set-up. The removable priming vessel and built-in maintenance programs offer easy maintenance. A quick change of wash heads facilitates the use of different plate types and applications.

Optimal washing performance for reliable assay results

The Wellwash washers efficiently remove liquid from wells. Very low residual volumes eliminate high background signal to ensure reliable assay results without the possibility of decreased assay sensitivity or false positive or negative test results.

Residual volumes are further minimized by the crosswise sweep aspiration mode. By adjusting wash parameters, such as the number of wash cycles, soaking time, shaking speed, dispense and aspiration height, and the aspiration speed, washing performance can be optimized to guarantee that the best possible washing performance is achieved.



Wellwash Versa



Wellwash

Reliable and secure performance

The wash and waste bottles in the Wellwash washers are not pressurized to minimize the risk of spillage and to prevent the washing liquid from being drawn into the aspiration pump, which could damage the instrument.

After using the instrument, the automatic rinse feature in Wellwash Versa can be set to operate in a specified time sequence to ensure that the liquid channels do not get clogged. The auto-prime feature in both washers dispenses a small amount of liquid at a selected time interval.

The liquid level sensors in both the wash and waste bottles guarantee safe performance. The plate sensor recognizes if a plate is present or not. The aerosol cover prevents aerosols of infectious diseases from spreading.

Added versatility for research use

Both washers feature linear shaking to increase washing efficiency. A USB port facilitates easy transferring of protocols and printing reports and log files.

A specially-designed wash head is available for cell washing in 96-well plates. The wash parameters of the Wellwash Versa can be adjusted to achieve a gentle wash to remove excess liquid without disturbing the cell layer, critical for cell washing applications.

Bottle stands for the included bottles as well as a special stand for user bottles are available for added convenience. A four liter wash bottle and a nine liter waste bottle are also available for the Wellwash Versa for automation applications.

To increase assay throughput, the Wellwash Versa can be connected to automation systems such as the Thermo Scientific™ RapidStak™ microplate stacker.

In addition the Installation Qualification (IQ), Operation Qualification (OQ) and Performance Qualification (PQ) documents and service packages are available.

Meets European Directives

The Wellwash (IVD model) conforms to the European IVD (In Vitro Medical Device) directive, making it ideal for ELISA applications in clinical laboratories. Built using the highest quality components, the Wellwash and Wellwash Versa conform to the RoHS (Restriction of Hazardous Substances) directives.

For More Information Visit:

thermoscientific.com/wellwash
thermoscientific.com/ELISAsolutions

Accessories

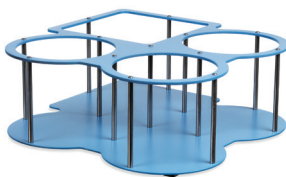
Bottle stands



Bottle stand 1 x 2 configuration
Wellwash



Bottle stand 1 x 4 configuration
Wellwash Versa



Bottle stand 2 x 2 configuration
Wellwash Versa



Bottle stand for user bottles

Bottle sizes



2 l wash bottle



9 l waste bottle



4 l wash bottle

Wash heads



1 x 8 wash head



2 x 8 Cell wash head



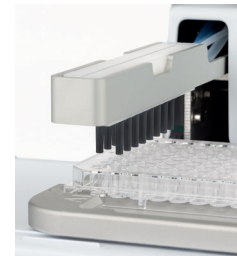
1 x 12 wash head



1 x 16 wash head



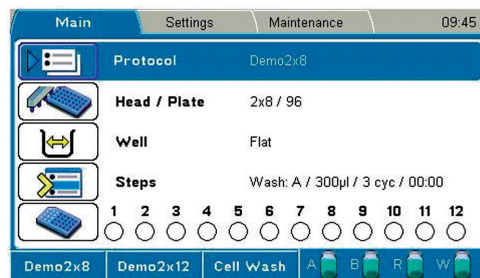
Wellwash with 1 x 8 wash head



Wellwash Versa with two 1 x 8 wash heads



Wellwash Versa with a USB flash memory stick



Wellwash Versa user interface - main view

Technical Specifications		
Feature	Wellwash	Wellwash Versa
Number of wash buffer bottles	1	Up to 3
Bottles	2 l wash bottle, 2 l waste bottle	2 x 2 l wash bottles, 1 x 2 l rinse bottle, 4 l waste bottle
Wash heads	1 x 8 or 1 x 12 wash head for 96-well plate supplied with the instrument depending on the model	Two 1 x 8 or two 1 x 12 wash heads for 96-well plate supplied with the instrument depending on the model 2 x 8 cell wash head for 96-well plate and 1 x 16 wash head for 384-well plate available as option
Plate types	96-well plates	96-, 384-well plates
Wash volume	50-1000 µl	50-1000 µl (96-well plate), 20-300 µl (384-well plate)
Prime volume/Rinsing Volume	5-100 ml/-	5-100 ml/5-100 ml
Dispensing volume	50-400 µl	50-400 µl (96-well plate), 20-120 µl (384-well plate)
Residual volume	< 2 µl	< 2 µl
Data Transfer	USB port	USB port
Dispense accuracy	< 5% @ 300 µl with 1 x 8 or 1 x 12 wash head	< 5% @ 300 µl, with n x 8 or n x 12 wash head < 5% @ 250 µl, with 2 x 8 cell wash head < 5% @ 100 µl, with 1 x 16 wash head
Dispense precision	< 3% (CV) @ 300 µl (96-well plate), with 1 x 8 or 1 x 12 wash head	< 3% (CV) @ 300 µl, with n x 8 or n x 12 wash heads < 3% (CV) @ 100 µl, with 1 x 16 wash head
Number of wash protocols	Up to 99	Up to 99
Robot compatible	No	Yes (USB or RS-232C)
Dimensions (H x W x D)	345 x 385 x 240 mm 13.6 x 15.2 x 9.4 in.	345 x 385 x 240 mm 13.6 x 15.2 x 9.4 in.
Weight	8 kg (17.6 lbs.)	9 kg (20 lbs.)

Ordering Information	
Catalog Number	Description
5165000	Wellwash 1 x 8, 100-240 V, 50/60 Hz, includes 1 x 8 wash head, 1 x 2 l wash bottle, 1 x 2 l waste bottle, aerosol cover
5165040	Wellwash 1 x 12, 100-240 V, 50/60 Hz, includes 1 x 12 wash head, 1 x 2 l wash bottle, 1 x 2 l waste bottle, aerosol cover
5165060*	Wellwash 1 x 8 (IVD model), 100-240 V, 50/60 Hz, includes 1 x 8 wash head, 1 x 2 l wash bottle, 1 x 2 l waste bottle, aerosol cover
5165080*	Wellwash 1 x 12 (IVD model), 100-240 V, 50/60 Hz, includes 1 x 12 wash head, 1 x 2 liter wash bottle, 1 x 2 l waste bottle, aerosol cover
5165010	Wellwash Versa 2 x 8, 100-240 V, 50/60 Hz, includes two 1 x 8 wash heads, 2 x 2 l wash bottle, 1 x 2 l rinse bottle, 1 x 4 l waste bottle, aerosol cover
5165050	Wellwash Versa 2 x 12, 100-240 V, 50/60 Hz, includes two 1 x 12 wash heads, 2 x 2 l wash bottle, 1 x 2 l rinse bottle, 1 x 4 l waste bottle, aerosol cover

Wellwash Accessories			
Catalog Number	Description	Wellwash	Wellwash Versa
N10800	1 x 8 wash head	X	X
N10801	1 x 12 wash head	X	X
N10802	2 x 8 cell wash head, Wellwash Versa	-	X
N10803	1 x 16 wash head, Wellwash Versa	-	X
N10805	2 l wash bottle, Wellwash (incl. cap with tubing and sensor)	X	-
N10806	2 l waste bottle, Wellwash (incl. cap with tubing and sensor)	X	-
N10807	2 l wash bottle A, Wellwash Versa (incl. cap with tubing and sensor)	-	X
N10808	2 l wash bottle B, Wellwash Versa (incl. cap with tubing and sensor)	-	X
N10809	2 l rinse bottle, Wellwash Versa (incl. cap with tubing and sensor)	-	X
N10810	4 l waste bottle, square (incl. cap with tubing and sensor)	X	X
N10811	4 l wash bottle A, round (incl. cap with tubing and sensor)	X	X
N10812	4 l wash bottle B, round, Wellwash Versa (incl. cap with tubing and sensor)	-	X
N10813	4 l rinse bottle, round, Wellwash Versa (incl. cap with tubing and sensor)	-	X
N10814	9 l waste bottle, rectangular (incl. cap with tubing and sensor)	X	X
N10817	Bottle stand 1 x 2 configuration (2 x 2 l bottles), Wellwash	X	-
N10818	Bottle stand 2 x 2 configuration (3 x 2 l bottles, 1 x 4 l bottle, square), Wellwash Versa	-	X
N10819	Bottle stand 1 x 4 configuration (3 x 2 l bottles, 1 x 4 l bottle, square), Wellwash Versa	-	X
N10820	Bottle stand for user bottles	X	X
N10821	Spare bottle 2 l with solid cap	X	X
N10822	Spare bottle 4 l round with solid cap	X	X

* Not available in North America

© 2013 Thermo Fisher Scientific Inc. All rights reserved. Intel and Pentium are trademarks of Intel Corporation in the United States and other countries. Windows and Windows Vista are trademarks of Microsoft Corporation in the United States and other countries. IBM is a registered trademark of International Business Machines Corporation. All (other) trademarks are the property of Thermo Fisher Scientific Inc. and its subsidiaries. Specifications, terms and pricing are subject to change. Not all products are available in all countries. Please consult your local sales representative for details.

Australia +61 39757 4300
Austria +43 1 801 40 0
Belgium +32 53 73 42 41
China +86 21 6865 4588 or
+86 10 8419 3588
France +33 2 2803 2180
Germany national
toll free 0800 1 536 376
Germany international
+49 6184 90 6000

India toll free 1800 22 8374
India +91 22 6716 2200
Italy +39 02 95059 554
Japan +81 45 453 9220
Netherlands +31 76 579 55 55
New Zealand +64 9 980 6700
Nordic/Baltic/CIS countries
+358 9 329 10200

Russia +7 812 703 42 15
Spain/Portugal +34 93 223 09 18
Switzerland +41 44 454 12 12
UK/Ireland +44 870 609 9203
USA/Canada +1 866 984 3766
Other Asian countries +852 2885 4613
Countries not listed +49 6184 90 6000

Thermo
SCIENTIFIC

Part of Thermo Fisher Scientific

BRALH Wellwash 0913
1513050