

The logo for ARCTEST, featuring the word "ARCTEST" in a bold, blue, sans-serif font, followed by a blue square icon containing a white stylized waveform or graph line.

ARCTEST

**EQUIPMENT FOR
ENVIRONMENTAL
RESISTANCE TESTS**



CLIMATIC TEST CHAMBERS

Much is required of the equipment for environmental resistance tests. The equipment must operate reliably without interference and failure during long test cycles and under very harsh conditions, and of course for many years. Our climate test chambers and rooms meet all the hard requirements that are required. In the design and manufacture we have specifically focused on precise control features, constant conditions in the chamber, long service life and availability of service and spare parts always at hand. All products are designed according to the standard IEC 60068-3-5.

In addition to the following examples of equipment, Arctest can manufacture fully customized products to solve your environmental resistance tests in the best possible way.



ARCTEST ARCF-1700

The chamber in the picture, ARCF-1700, is designed for the temperature range -70 ... + 180 ° C with a temp change rate of 10 ° C / minute. All Arctest's rooms are made based on customer as well as test requirements. Temperatures are steplessly programmable with microprocessor with PC connection. The system is user-friendly, safe and with easy programming, operation and monitoring of the test chamber. The chassis is made of polished stainless steel with welded inner joints. The insulation is in CFC-free polyurethane and stone wool.

Volume: 1700 liters

Temperature: -70...+180°C

Humidity: RH 10-98%

Inner dimensions (mm): W1000, H1700, D100

Outer dimensions (mm): W1500, H2100, D2360

Observation window: 5-layer thermal glass

Cable ports: 2pcs, 100mm

Power supply: 3 phase 230/400 VAC, 50 Hz



INELTEC INECC-70/500

Ineltec's compact climate test chamber is designed to perform temperature tests in combination with moisture. The products from Ineltec have quick and easy programming through either touchscreen on the door of the room or via PC. Remote access via Ethernet or Wifi is available. A large number of optional products are available for all the chambers of the assortment. Ask your contact person for more information.

Volume: 500 liters

Temperature: -70...+150°C

Humidity: RH 10-98%

Inner dimensions (mm): W800, H800, D800

Outer dimensions (mm): W1100, H1985, D1200

Observation window: 5-layer thermal glass

Cable port: 1 pcs, 50mm

Power supply: 3 phase 230/400 VAC, 50Hz



JEIO TECH TH-KE-100

High quality and lightweight 100-liter chamber from Jeio Tech. Easy programming via a user-friendly 5.7 "touchscreen on the room or via PC connection. Corrosion-proof stainless steel chamber and electrically polished humidifier tank. Maintenance and refilling of water supply is easy with the built-in water tank. Observation window with built-in heating cable is included as standard. Energy efficient LED lighting with long service life. 1pcs 50 mm cable port is included as standard on the left side of the chamber.

Volume: 100 liters

Temperature: -40 ... + 150 °C

Humidity: RH 20-95%

Inner dimensions (mm): W498, D390, H538

Outer dimensions (mm): W760, D1108, H1096

Observation Window: 5-layer thermal glass

Cable port: 1 pcs, 50mm

Power supply: 1 phase 230/400 VAC, 50 Hz



INELTEC THERMAL SHOCK TEST CHAMBER

Thermal shock test chambers are designed to test the endurance of samples for demands on very rapid temperature changes. Made of 2 to 3 vertical or horizontal compartments. Fast and easy programming via touchscreen or via remote connection to PC. Communication ETHERNET, WIFI

Volume: 16, 64 or 166 liters (per compartment)

Temperature: -50...+200°C/-70...+200°C

Observation window: 5-layer thermal glass

Power supply: 3 phase 230/400 VAC, 50Hz



INELTEC SALT SPRAY CHAMBER

Ineltec salt spray chamber is designed to perform salt spray test/corrosion test where the samples are exposed in a salt-air atmosphere. Control via touchscreen or via PC. The software in the chamber is PROCAM-WIN. There are many accessories and options for this type of chamber. Ask your contact person for further information.

Volume: 400, 1000 or 2000 liters (Larger volume available on request)

Temperature: Ambient to + 50 °C

Observation hood: Reinforced plexiglass

Power supply: 1/3 phase 230/400 VAC, 50Hz



ARCTEST CLIMATE TEST ROOM

Arctest's precise and high quality climate test rooms are widely used in the industry, defence and universities test and product development laboratories. The climate rooms require very precise conditions for varying test runs, long term reliability and that they are designed for testing the customer products. Arctest's climate rooms meet the most demanding conditions and are always tailored to customer needs.

Volume: 2,000 – 20,000 liters (or larger volume if required)

Temperature: -80...+180°C/as desired

Humidity: RH 10-98%

Dew Point: up to 4°C

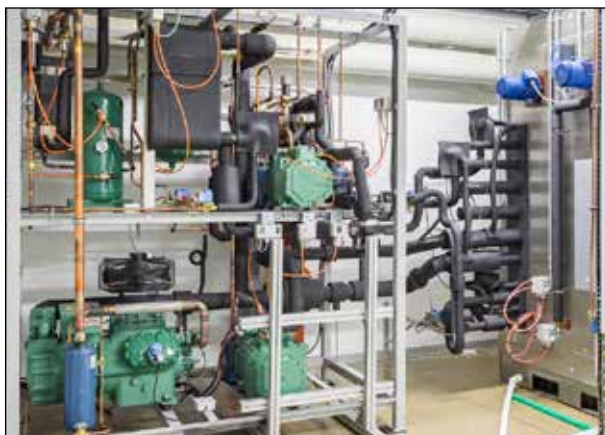
Control unit: Jumo mTron, 8.5" touch screen

Observation window: 5-layer thermal glass

Implementation: At request

Power supply: 3 phase 230/400 VAC, 50 Hz

For all products, there is a comprehensive selection of applications, such as user-friendly, microprocessor-based basic control, from data collection and PC applications to complete control programs, efficient cooling, CO₂, UV radiation, shelves, work lights, alarm systems, irrigation, etc.



INSTALLATION AND SERVICE

As a manufacturer and importer of top quality climate test equipment we have learned the demanding cooling technology and electronics. Our strength includes expert and prompt service and calibration. With a telephone call you get "first aid" and if necessary, our service technician will visit you. The spare parts can be ordered directly from the warehouse and they are delivered the same day.

SERVICE AGREEMENT

We recommend that you sign an annual service agreement with us that ensures the product's safe operation for many years to come. The service includes inspection of the operation of the refrigeration and humidifier, measurement of the engine's electrical values and possible replacement of worn components. A significant part of the annual service consists of the calibration of the sensors, which ensures the reliability of the test results.

FORM FOR CHOICE OF CLIMATE TEST EQUIPMENT

Tick and fill in the respective box together with your contact person with us.

Type of chamber:

Reach in	Walk in	Mobile	Other:
----------	---------	--------	--------

Application:

Climate/moist	Temperature	Chock	Salt spray
Light	Stability	Owen	Autoclave
Plant growth	Deep freeze	Other:	

Temp (range): e.g.: -50..+120°C

Cooling system: Water Air

Moist (range): e.g.: 10-98RH

Water for moisture: Tank Added (tap)

Volyme Reach in (liters):

25*	65*	100*	150	180
300	400	500	750	800
1000	1500	2000	Other:	

* Table top

Equipment (Describe):

Window:	<input type="text"/>
Wheel:	<input type="text"/>
UV-light:	<input type="text"/>
Rain Sprinkler:	<input type="text"/>

Door type:	<input type="text"/>
Left/Right door:	<input type="text"/>
Lighting:	<input type="text"/>
Cable ports:	<input type="text"/>

Number, diameter

Other requests,
notes:

Desired delivery time:

ab ninolab

AB Ninolab

Instrumentvägen 4, Box 137, 194 22 Upplands-Väsby, Sweden

Phone: 08-590 962 00, Email: info@ninolab.se

www.ninolab.se