



## TECHNICAL INFORMATION

Life Science dimensional sketches.  
Scan the QR code.

### **KEN HYGIENE SYSTEMS A/S**

Bøgebjergvej 60

DK-5672 Broby

Tlf. +45 62 63 10 91

Fax +45 62 63 16 07

ken@ken.dk

www.ken.dk

The logo for KEN Hygiene Systems, featuring the word "KEN" in a stylized blue font with a white outline, followed by "HYGIENE SYSTEMS" in a smaller, solid blue font. The background of the entire page is a collage of images: a close-up of a person's face wearing a white lab coat, a hairnet, safety glasses, and a white face mask; a close-up of a person's hands wearing white nitrile gloves; and a close-up of a person's face wearing a white lab coat, a hairnet, safety glasses, and a white face mask. The background is a collage of images: a close-up of a person's face wearing a white lab coat, a hairnet, safety glasses, and a white face mask; a close-up of a person's hands wearing white nitrile gloves; and a close-up of a person's face wearing a white lab coat, a hairnet, safety glasses, and a white face mask.

**KEN** HYGIENE SYSTEMS®

INTELLIGENT DISINFECTION

# Accessories

for KEN IQ Life Science Series

Clean, Lean & Green



# Intelligent solutions

- The future of effective disinfection

## Equipment for KEN IQ3, IQ4, IQ5 and IQ6

The large range of flexible loading equipment available for KEN IQ series is designed to meet the requirements for cleaning and disinfecting glassware in a modern laboratory.

The machine is the obvious choice for washing, disinfection and drying in laboratories and pharmaceutical industry. Find all the available loading equipment for KEN IQ LAB series in this catalogue.

Combine the various loading equipment to suit your specific need. The combination of loading equipment makes it possible to wash and disinfect all types of glassware and equipment.

For further information about customized special solutions, please contact KEN.

### IQ3

Loading shelves	PAGE 4-5
Distributors	PAGE 6-9
Support for other accessories	PAGE 10-11
Support for flasks	PAGE 12-13
Other accessories	PAGE 14-15

---

### IQ4

Loading racks	PAGE 16-17
Modules for base rack	PAGE 18-19
Distributors	PAGE 20-21
Support for other accessories	PAGE 22-23
Support for flasks	PAGE 24-25
Other accessories	PAGE 26-27

---

### IQ5

Loading racks	PAGE 28-29
Modules for base rack	PAGE 30-33
Distributors	PAGE 34-35
Support for other accessories	PAGE 36-37
Support for flasks	PAGE 38-39
Other accessories	PAGE 40-41

---

### IQ6

Loading racks	PAGE 42-43
Modules for base rack	PAGE 44-45
Distributors	PAGE 46-47
Support for other accessories	PAGE 48-49
Support for flasks	PAGE 50-51
Other accessories	PAGE 52-53

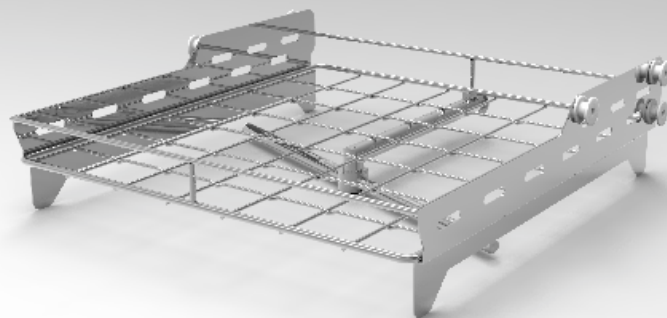
---

### TROLLEYS

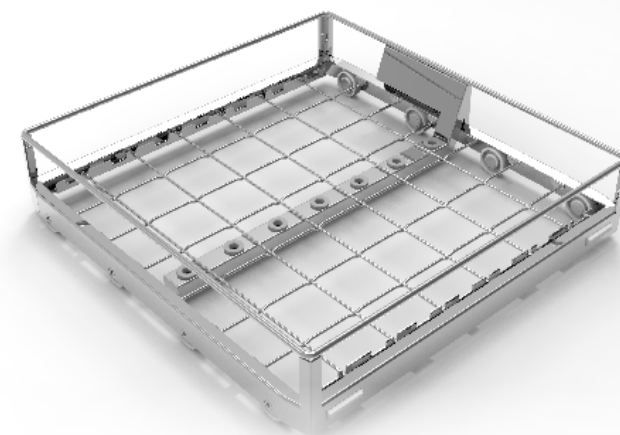
Manual loading trolley	PAGE 54-55
------------------------	------------



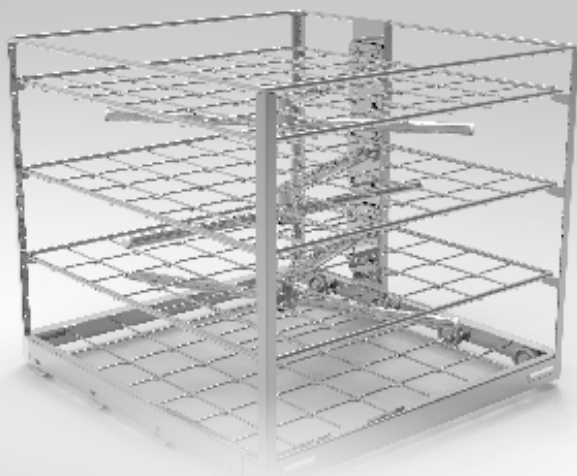
**BASIC RACK**  
Basic lower level rack  
ref. 2938093



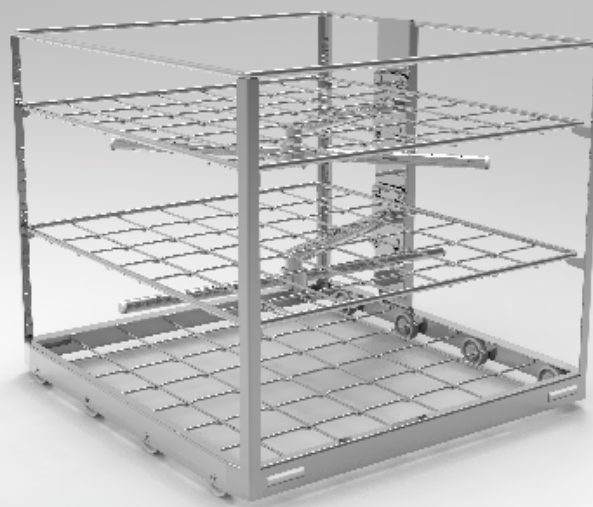
**BASIC RACK**  
Basic top level shelf including washing arm  
ref. 2938012



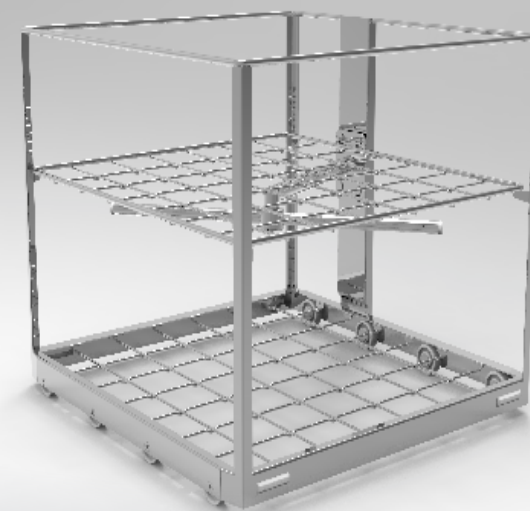
**BASIC RACK**  
Basic lower level rack for distributors  
ref. 2938113



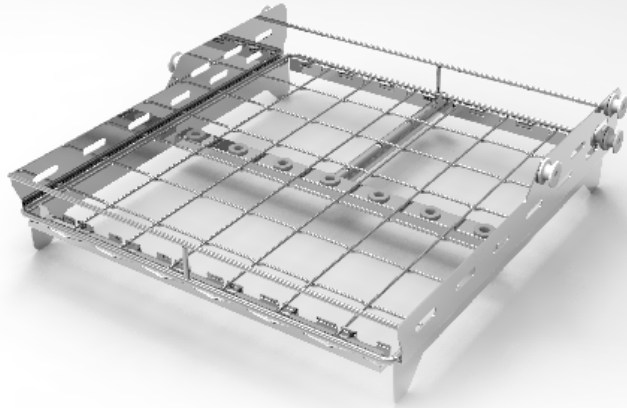
**FLEXIBLE RACK**  
for washing in 4 levels  
ref. 2938074



**FLEXIBLE RACK**  
for washing in 3 levels  
ref. 2938069

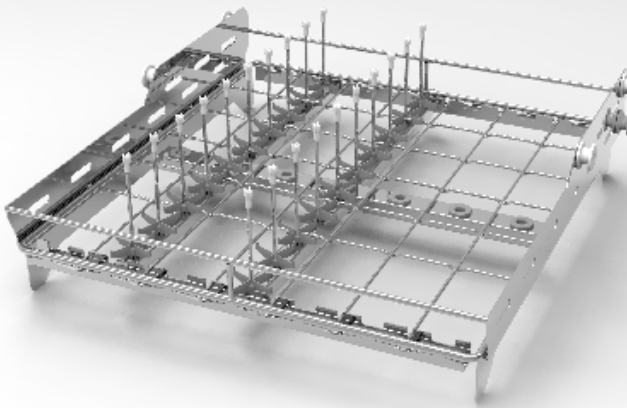


**FLEXIBLE RACK**  
for washing in 2 levels  
ref. 2938090



#### **BASIC RACK**

Basic top level rack for distributors  
ref. 2938114



#### **FLEXI RACK**

ref. 2938114/2938122

## IQ3 LOADING SHELVES

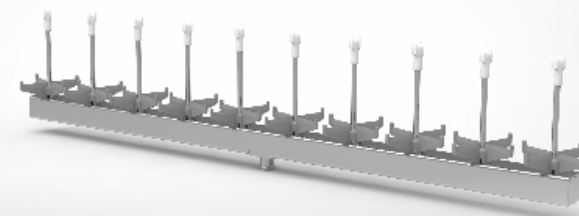
The Loading systems for KEN IQ3 LAB is designed in stainless steel. It is normally configured for the standard shelf system “Flexi Rack” for top and bottom, but a machine for racks is also available.

The IQ3 is designed to wash high items in 1 level or smaller and medium sized items in 2 levels. The Flexi System makes it easy to equip the machine with the right accessories for any kind of laboratory wash load. Every injector is connected not only to the internal water pump system for washing but also to the hot air blower motor, so every piece of glassware or equipment will be washed and dried as well from the inside as the outside. There is also a rack machine available for baskets.

## IQ3 DISTRIBUTORS

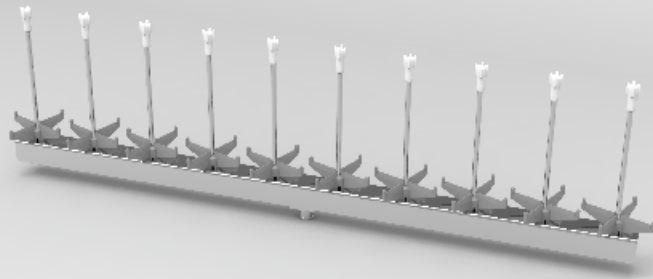
The distributors are designed to give optimum flexibility. It comes in two types. Either with fixed spikes or with threaded connections for holders. This gives the possibility to optimize the flexibility. The shelves can be equipped with both large systems for large volume flasks and at the same time have other distributors with a lot of spikes for small glassware. The flexibility makes the most obvious appearance when you need to adapt for a different lot of goods. Unlike rack systems you only change or apply one or maybe two distributors and your interior rack design changes completely.

This procedure is easily done and without heavy lifting of any kind. Furthermore the laboratory saves a lot of storage space, as the rack design is so flexible. Thus you only need one shelf and a few extra distributors to be able to accommodate a great variety of laboratory glassware and other equipment.



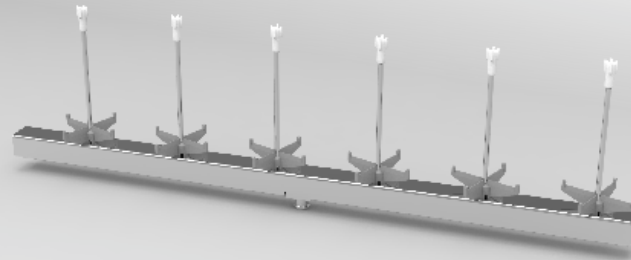
**DISTRIBUTOR UNIT**  
10 x 60 mm. fixed injectors

Distributor unit with 10 x 60 mm.  
fixed injectors. Injector position  
spread: 52 mm.  
ref. 2938121



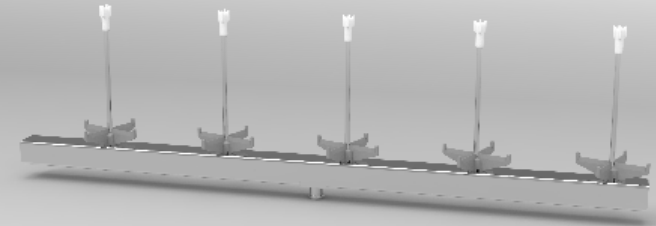
**DISTRIBUTOR UNIT**  
10 x 95 mm. fixed injectors

Distributor unit with 10 x 95 mm.  
fixed injectors. Injector position  
spread: 52 mm.  
ref. 2938122



**DISTRIBUTOR UNIT**  
6 x 95 mm. fixed injectors

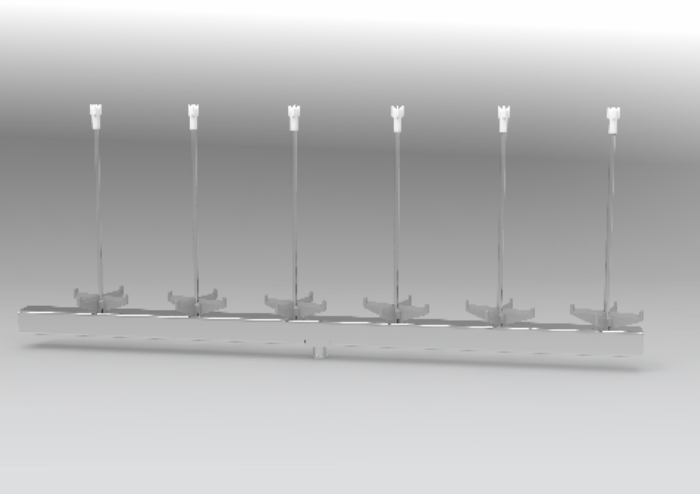
Distributor unit with 6 x 95 mm.  
fixed injectors. Injector position  
spread: 81 mm.  
ref. 2938123



**DISTRIBUTOR UNIT**  
5 x 95 mm. fixed injectors

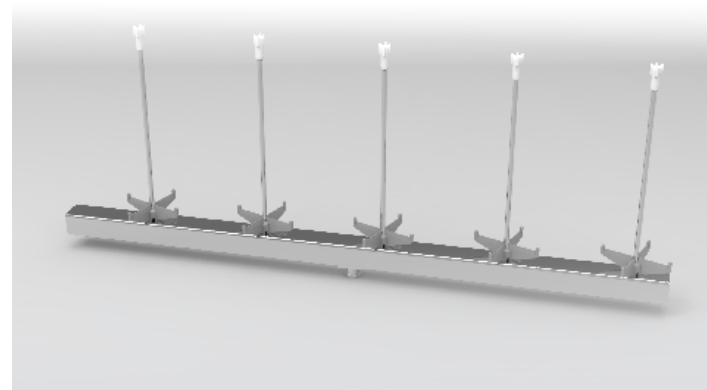
Distributor unit with 5 x 95 mm.  
fixed injectors. Injector position  
spread: 99,3 mm.  
ref. 2938124





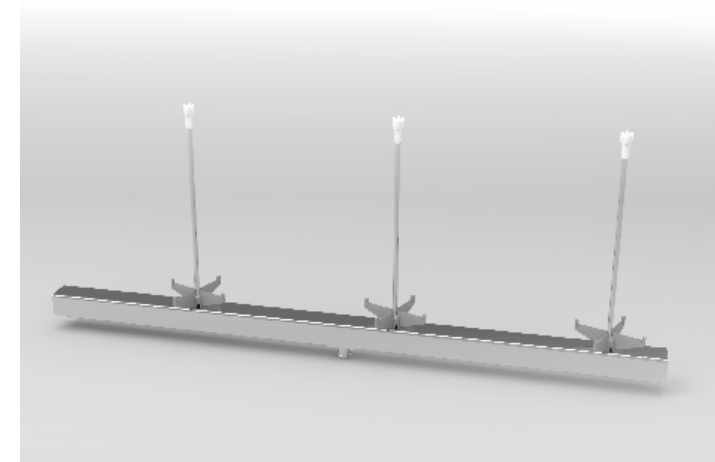
**DISTRIBUTOR UNIT**  
6 x 150 mm. fixed injectors

Distributor unit with 6 x 150 mm.  
fixed injectors. Injector position  
spread: 81 mm.  
ref. 2938125



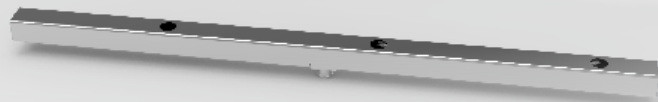
**DISTRIBUTOR UNIT**  
5 x 150 mm. fixed injectors

Distributor unit with 5 x 150 mm.  
fixed injectors. Injector position  
spread: 99,3 mm.  
ref. 2938126



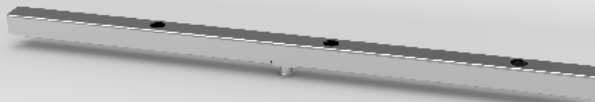
**DISTRIBUTOR UNIT**  
3 x 150 mm. fixed injectors

Distributor unit with 3 x 150 mm.  
fixed injectors. Injector position  
spread: 165 mm.  
ref. 2938127



**DISTRIBUTOR UNIT**  
3 x threaded connections  
165 mm distance

Distributor unit (excl. injectors):  
3 x threaded connections.  
Spread: 165 mm.  
ref. 2938128



**DISTRIBUTOR UNIT**  
3 x threaded connections  
151 mm distance

Distributor unit (excl. injectors):  
3 x threaded connections.  
Spread: 151 mm.  
ref. 2938129

## IQ3 DISTRIBUTORS

The distributors are designed to give optimum flexibility. It comes in two types. Either with fixed spikes or with threaded connections for holders. This gives the possibility to optimize the flexibility. The shelves can be equipped with both large systems for large volume flasks and at the same time have other distributors with a lot of spikes for small glassware. The flexibility makes the most obvious appearance when you need to adapt for a different lot of goods. Unlike rack systems you only change or apply one or maybe two distributors and your interior rack design changes completely.

This procedure is easily done and without heavy lifting of any kind. Furthermore the laboratory saves a lot of storage space, as the rack design is so flexible. Thus you only need one shelf and a few extra distributors to be able to accommodate a great variety of laboratory glassware and other equipment.

## IQ3 SUPPORT FOR OTHER ACCESSORIES

The jet spikes from KEN HYGIENE SYSTEMS are always delivered with nozzles. These nozzles serve several purposes. Among other purposes it serves to ensure that the water spreads correctly. Due to continued testing our R&D has developed a new nozzle that performs the perfect spread of water and also contributes with a support of mechanical power to the spray of water that contributes to the best cleaning result.

The nozzle also helps protect the glassware from damage. The spikes are made of stainless steel and the nozzle then shields the glassware from the steel. The nozzle is also designed in a way that creates space between the spike and the glass.



NOZZLE

Nozzle for Ø4 injectors (threaded).  
ref. 2900897



NOZZLE

Nozzle for pipettes.  
ref. 2900913



JET SPIKES Ø5

Jet spikes Ø5 x 200 mm. for threaded units. Nozzle (tip) Ø8. ref. 8300105



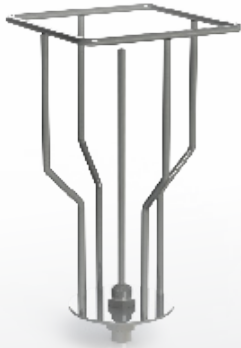
JET SPIKES Ø6

Jet spikes Ø6 x 270 mm. for threaded units. Nozzle (tip) Ø10. ref. 8300106



JET SPIKES Ø8

Jet spikes Ø8 x 360 mm for threaded units. Nozzle (tip) Ø13. ref. 8300107



SUPPORT FOR FLASKS  
500-1.000 ml.

Glassware adapter for threaded units. For e.g. Erlenmeyer 1.000 ml., Blue Cap 500-1.000 ml.  
ref. 8300305



SUPPORT FOR FLASKS  
5.000-10.000 ml.

Glassware adapter for threaded units. For large flasks 5.000 ml. - 10.000 ml.  
ref. 8300310



SUPPORT FOR FLASKS  
500-2.000 ml.

Glassware adapter for threaded  
For volumetric flasks 500 ml. -  
2.000 ml. units.  
ref. 8300312



SUPPORT FOR FLASKS  
2.000-5.000 ml.

Glassware adapter for threaded For  
Erlenmeyer 2.000 - 5.0000 ml.  
ref. 8300313

## IQ3 SUPPORT FOR FLASKS

If there is no space in between the glass and the spike there is a risk of clogging the spike. The design of the KEN Nozzle eliminates that risk.

KEN HYGIENE SYSTEMS has for several decades designed holders for laboratory glassware. This has been designed taking effectivity, safety and flexibility into account. The holder systems are fitted with the threaded connection to the threaded distributors. The new system for the IQ series is designed with the same threaded piece as our previous models, which means that your existing KEN holders can be placed directly in the new IQ machines. This is also the case with customized holder systems from KEN HYGIENE SYSTEMS .



## IQ3 - OTHER ACCESSORIES

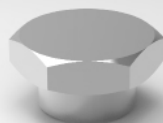
KEN is always developing and adapting to the world surrounding us. Therefore we also have a continuous development of accessories. To the right you will find the most common and likely to be of your interest.

We strive to always be up to date with our product program and even though we are pioneering the market of glassware washers with the IQ series, we are still designing our accessories to be compatible with existing holders and spikes. If in any doubt, please do not hesitate to seek out counseling and contact our experts at KEN Life Science.

1



2

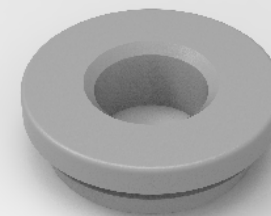


3



- 1: Plug for closing unused injector unit positions. ref. 2901020
- 2: Plug for closing unused threaded connections on units. ref. 8300091
- 3: Height adjustment spring for glassware supports. ref. 2900563

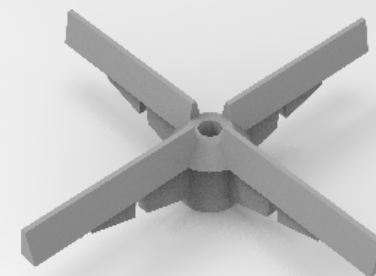
4



5

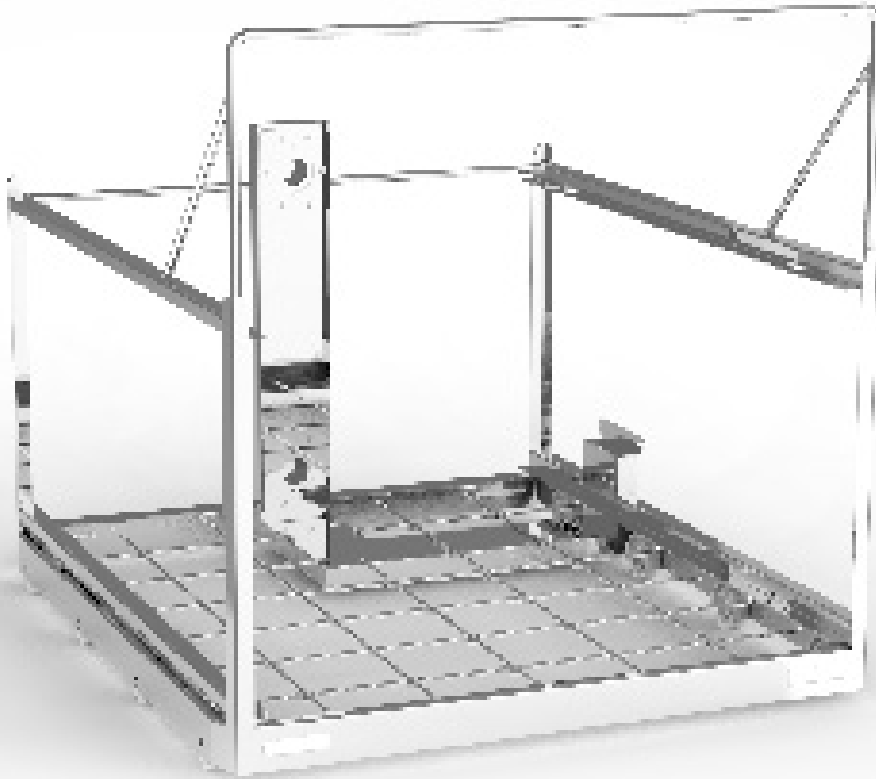


6



- 4: Grommet for connecting injector units on modules. ref. 2900811
- 5: Nozzle tip: 5 mm. ref. 8300109. 6 mm. ref. 8300110. 8 mm. ref. 8300111.
- 6: Glassware support for Ø4 injectors. ref. 7608938

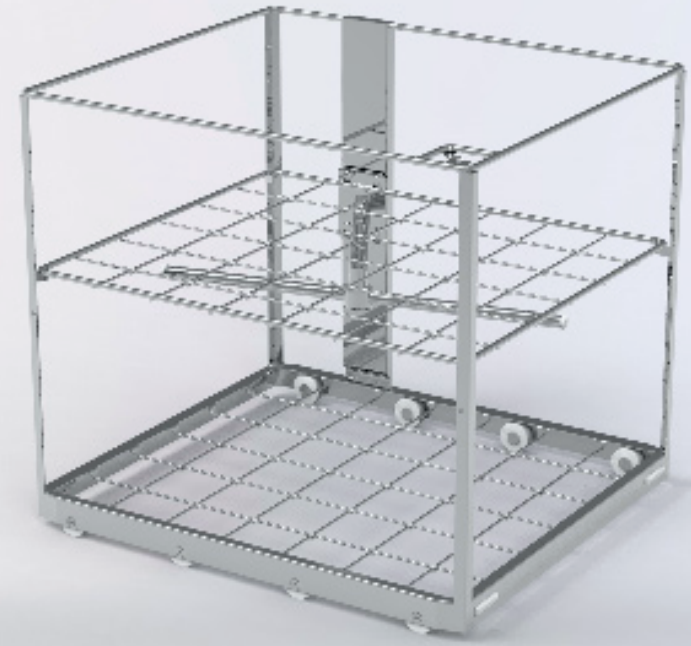




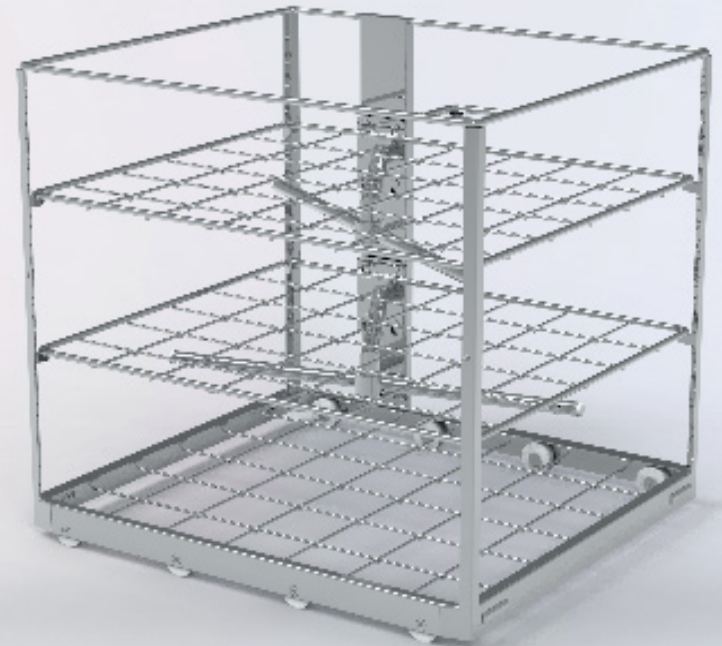
## BASE GLASSWARE RACK

**Up to 2 levels, excl. modules ref. 2928698**

The base glassware rack is designed to wash in 2 levels. Both levels has internal washing and drying. The shelves can be equipped with modules, distributors and injectors that you will find on the next pages. Every injector is connected not only to the internal water pump system for washing but also to the hot air blower motor, so every piece of glassware or equipment will be washed and dried as well form the inside as the outside.



IQ4 Rack. 2 level. ref. 2928604



IQ4 Flexible rack. 3 level. ref. 2928464

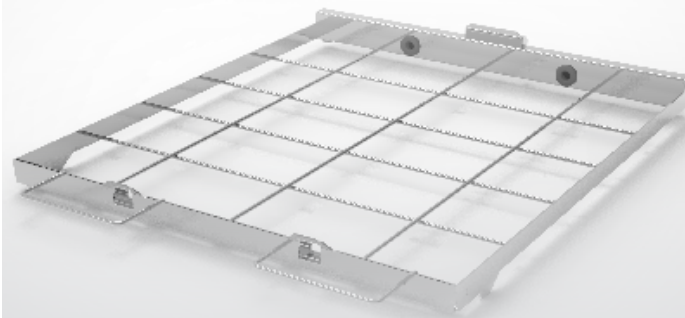
## IQ4 LOADING RACKS

The Loading rack for KEN IQ4 LAB is designed in stainless steel. It is fitted with a top load indicator, so that the glassware is not damaged when it is pushed into the washing chamber. It is aligned with 8 wheels that ensures a smooth, silent and safe transportation in and out of the washing chamber.

## IQ4 MODULES FOR BASE RACK

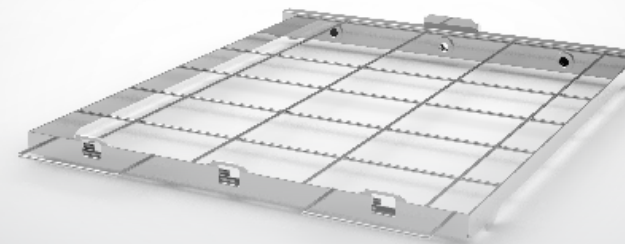
The modules for base rack are designed for the general or specific need. The idea of using modules for base rack is to avoid heavy lifting and thus ensure the best possible ergonomic work environment for the user. The module system also creates a great flexibility in terms of changing to a different load of goods. Furthermore the module system ensures that you can easily adapt to the future if you should have a change in the laboratory routine.

The pipette module is designed to be placed in the lowest position. This is due to the long pipettes that demands a lot of height. All the other modules can be placed in any position that suits the using staff best.



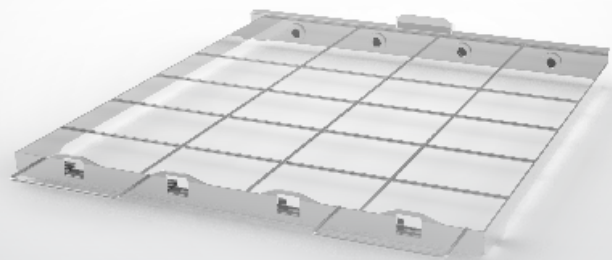
**MODULE  
2 DISTRIBUTORS**

Glassware module for  
2 injector units. Unit position  
spread: 205 mm.  
ref. 2928348



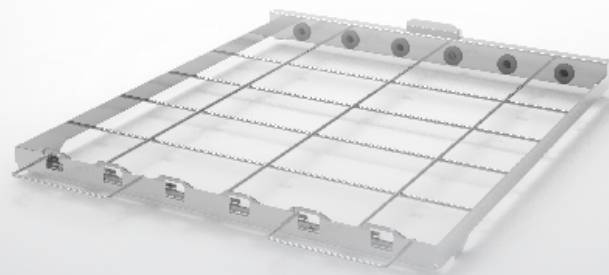
**MODULE  
3 DISTRIBUTORS**

Glassware module for  
3 injector units. Unit position  
spread: 160 mm.  
ref. 2928347



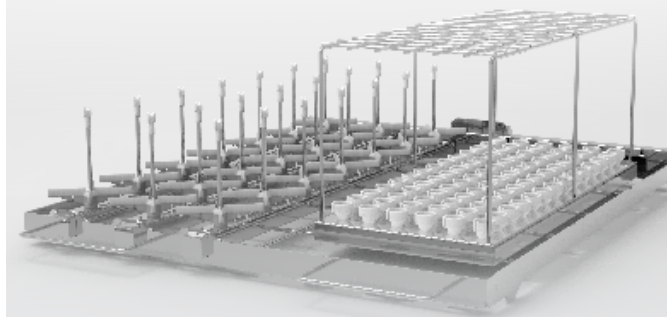
**MODULE  
4 DISTRIBUTORS**

Glassware module for  
4 injector units. Unit position  
spread: 115 mm.  
ref. 2928345



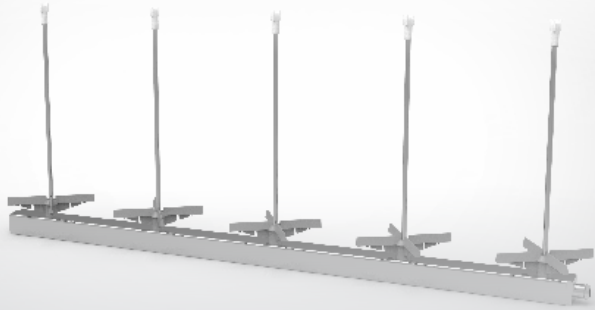
**MODULE  
6 DISTRIBUTORS**

Glassware module for  
6 injector units. Unit position  
spread: 75 mm.  
ref. 2928344



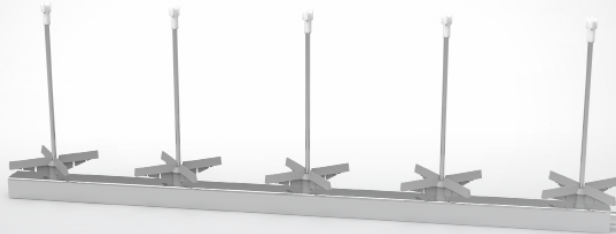
**MODULE  
PIPETTES 84 PCS**

Glassware module for pipettes  
(84 pcs.) + 3 injector units. Pipette  
length min. 160 mm., max. 630 mm.  
Unit position spread: 75 mm.  
ref. 2928346



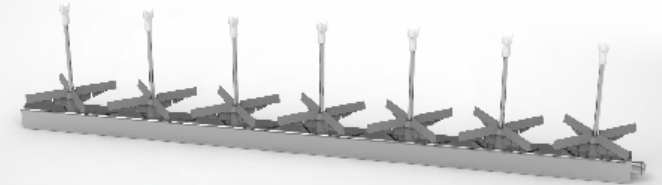
**DISTRIBUTOR UNIT**  
5 x 200 mm. fixed injectors

Distributor unit with 5 x 200 mm.  
fixed injectors. Injector position  
spread: 115 mm.  
ref. 2928360



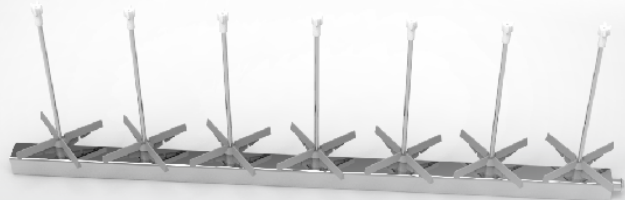
**DISTRIBUTOR UNIT**  
5 x 160 mm. fixed injectors

Distributor unit with 5 x 160 mm.  
fixed injectors. Injector position  
spread: 115 mm.  
ref. 2928356



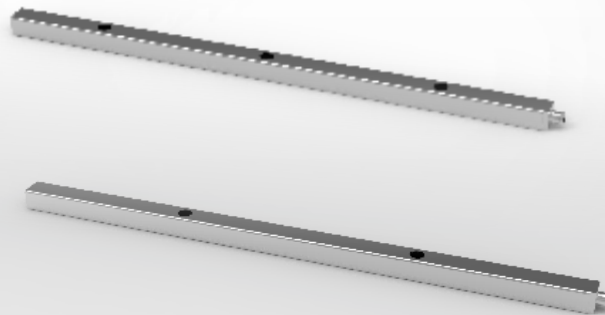
**DISTRIBUTOR UNIT**  
7 x 100 mm. fixed injectors

Distributor unit with 7 x 100 mm.  
fixed injectors. Injector position  
spread: 75 mm.  
ref. 2928355



**DISTRIBUTOR UNIT**  
7 x 160 mm. fixed injectors

ref. 2928618



**DISTRIBUTOR UNIT**  
2 or 3 x threaded connections

Distributor unit (excl. injectors):  
2 x threaded connections.  
Spread: 215 mm. ref. 2928359.  
3 x threaded connections  
Spread: 165 mm. ref. 2928358

## IQ4 DISTRIBUTORS

The distributors are designed to give optimum flexibility. It comes in two types. Either with fixed spikes or with threaded connections for holders. This gives the possibility to optimize the flexibility. The rack or module can be equipped with both large systems for large volume flasks and at the same time have other distributors with a lot of spikes for small glassware.

The flexibility makes the most obvious appearance when you need to adapt for a different lot of goods. Unlike other racks you only change or apply one or maybe two distributors and your interior rack design changes completely. This procedure is easily done and without heavy lifting of any kind. Furthermore the laboratory saves a lot of storage space, as the rack design is so flexible. Thus you only need one rack and a few extra distributors to be able to accommodate a great variety of laboratory glassware and other equipment.

## IQ4 SUPPORT FOR OTHER ACCESSORIES

The jet spikes from KEN HYGIENE SYSTEMS are always delivered with nozzles. These nozzles serve several purposes. Among other purposes it serves to ensure that the water spreads correctly. Due to continued testing our R&D has developed a new nozzle that performs the perfect spread of water and also contributes with a support of mechanical power to the spray of water that contributes to the best cleaning result.

The nozzle also helps protect the glassware from damage. The spikes are made of stainless steel and the nozzle then shields the glassware from the steel. The nozzle is also designed in a way that creates space between the spike and the glass.



NOZZLE

Nozzle for Ø4 injectors (threaded).  
ref. 2900897



NOZZLE

Nozzle for pipettes.  
ref. 2900913



JET SPIKES Ø5

Jet spikes Ø5 x 200 mm. for threaded units. Nozzle (tip) Ø8. ref. 8300105



JET SPIKES Ø6

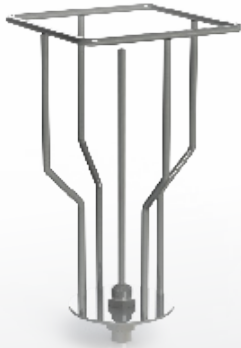
Jet spikes Ø6 x 270 mm. for threaded units. Nozzle (tip) Ø10. ref. 8300106



JET SPIKES Ø8

Jet spikes Ø8 x 360 mm for threaded units. Nozzle (tip) Ø13. ref. 8300107





SUPPORT FOR FLASKS  
500-1.000 ml.

Glassware adapter for threaded  
units. For e.g. Erlenmeyer 1.000  
ml., Blue Cap 500-1.000 ml.  
ref. 8300305



SUPPORT FOR FLASKS  
5.000-10.000 ml.

Glassware adapter for threaded  
units. For large flasks 5.000 ml.  
- 10.000 ml.  
ref. 8300310



SUPPORT FOR FLASKS  
500-2.000 ml.

Glassware adapter for threaded  
For volumetric flasks 500 ml. -  
2.000 ml. units.  
ref. 8300312



SUPPORT FOR FLASKS  
2.000-5.000 ml.

Glassware adapter for threaded For  
Erlenmeyer 2.000 - 5.0000 ml.  
ref. 8300313

## IQ4 SUPPORT FOR FLASKS

If there is no space in between the glass and the spike there is a risk of clogging the spike. The design of the KEN Nozzle eliminates that risk.

KEN HYGIENE SYSTEMS has for several decades designed holders for laboratory glassware. This has been designed taking effectivity, safety and flexibility into account. The holder systems are fitted with the threaded connection to the threaded distributors. The new system for the IQ series is designed with the same threaded piece as our previous models, which means that your existing KEN holders can be placed directly in the new IQ machines. This is also the case with customized holder systems from KEN HYGIENE SYSTEMS .



## IQ4 - OTHER ACCESSORIES

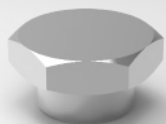
KEN is always developing and adapting to the world surrounding us. Therefore we also have a continuous development of accessories. To the right you will find the most common and likely to be of your interest.

We strive to always be up to date with our product program and even though we are pioneering the market of glassware washers with the IQ series, we are still designing our accessories to be compatible with existing holders and spikes. If in any doubt, please do not hesitate to seek out counseling and contact our experts at KEN Life Science.

1



2



3



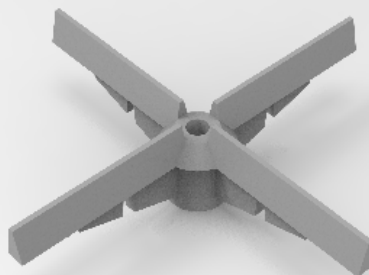
4



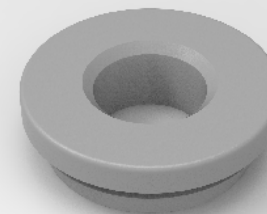
5



6



7



8



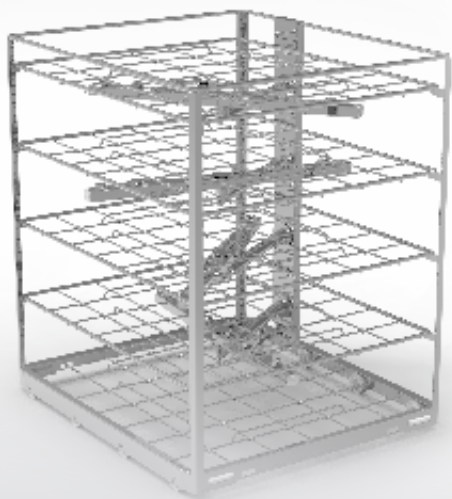
9



1: Plug for closing unused injector unit positions. ref. 2901020  
 2: Plug for closing unused threaded connections on units. ref. 8300091  
 3: Height adjustment spring for glassware supports. ref. 2900563

4: Cold touch handle for racks. ref. 2928193  
 5: Hook for loading & unloading racks from machine ref. 2908556  
 6: Glassware support for Ø4 injectors. ref. 7608938

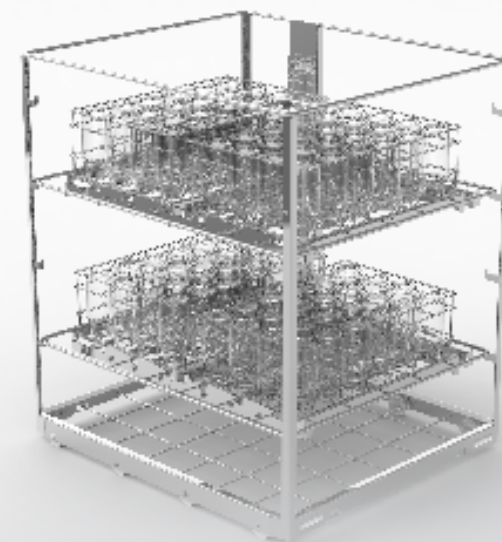
7: Grommet for connecting injector units on modules. ref. 2900811  
 8: Nozzle tip: 5 mm. ref. 8300109. 6 mm. ref. 8300110. 8 mm. ref. 8300111.  
 9: Washing arm for rack. ref. 2928732



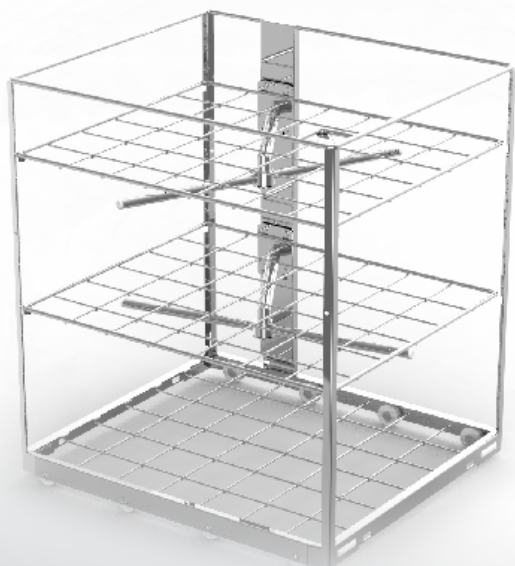
**VIALS RACK**  
5 levels, for cleaning whole boxes of  
laboratory vials. ref. 2908699



**BASE GLASSWARE RACK**  
Up to 3 levels, excl. modules  
ref. 2908343



**RACK FOR BOTTLES**  
125 ml./250 ml.  
ref. 2908362/2908361



**FLEXIBLE RACK**  
for washing in 3 levels  
ref. 2908464



**FLEXIBLE RACK**  
for washing in 4 levels  
ref. 2908169



**FLEXIBLE RACK**  
for washing in 5 levels  
ref. 2908161

## IQ5 LOADING RACKS

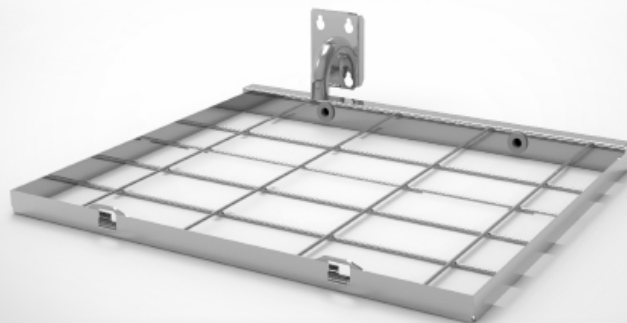
The Loading rack for KEN IQ5 LAB is designed in stainless steel. It is fitted with a top load indicator, so that the glassware is no damaged when it is pushed into the washing chamber. It is aligned with 8 wheels that ensures a smooth, silent and safe transportation in and out of the washing chamber.

It is designed to wash in up to 3 levels in 4 different positions. All levels has internal washing and drying. The shelves can be equipped with modules, distributors and injectors that you will find on the next pages. Every injector is connected not only to the internal water pump system for washing but also to the hot air blower motor, so every piece of glassware or equipment will be washed and dried as well form the inside as the outside.

## IQ5 MODULES FOR BASE RACK

The modules for base rack are designed for the general or specific need. The idea of using modules for base rack is to avoid heavy lifting and thus ensure the best possible ergonomic work environment for the user. The module system also creates a great flexibility in terms of changing to a different load of goods. Furthermore the module system ensures that you can easily adapt to the future if you should have a change in the laboratory routine.

The pipette module is designed to be placed in the lowest position. This is due to the long pipettes that demands a lot of height. All the other modules can be placed in any position that suits the using staff best.



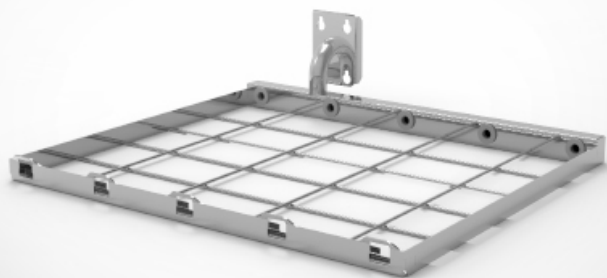
MODULE  
2 DISTRIBUTORS

Glassware module for  
2 injector units. Unit position  
spread: 270 mm.  
ref. 2908348



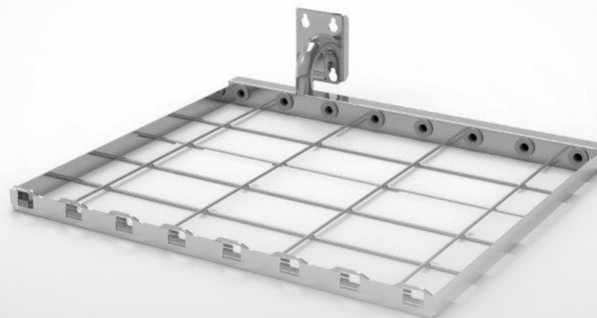
MODULE  
4 DISTRIBUTORS

Glassware module for  
4 injector units. Unit position  
spread: 150 mm.  
ref. 2908347



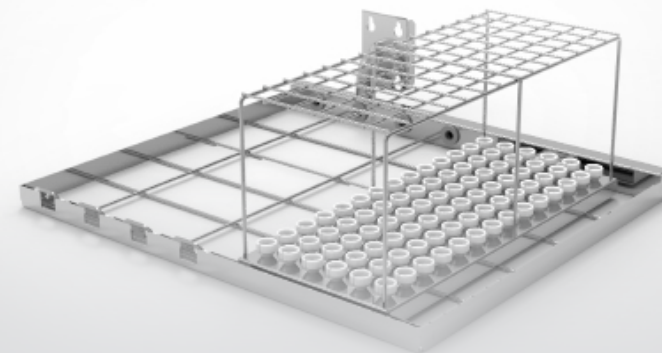
**MODULE  
5 DISTRIBUTORS**

Glassware module for  
5 injector units. Unit position  
spread: 120 mm.  
ref. 2908345



**MODULE  
8 DISTRIBUTORS**

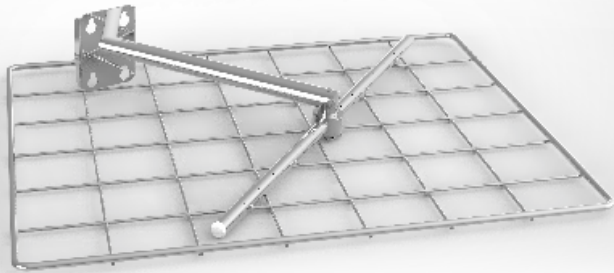
Glassware module for  
8 injector units. Unit position  
spread: 70 mm.  
ref. 2908344



**MODULE  
PIPETTES 84 PCS**

Glassware module for pipettes (84  
pcs.) + 4 injector units. Pipette length  
min. 160 mm, max. 630 mm.  
Unit position spread: 70 mm.  
ref. 2908346





## GLASSWARE UNIT

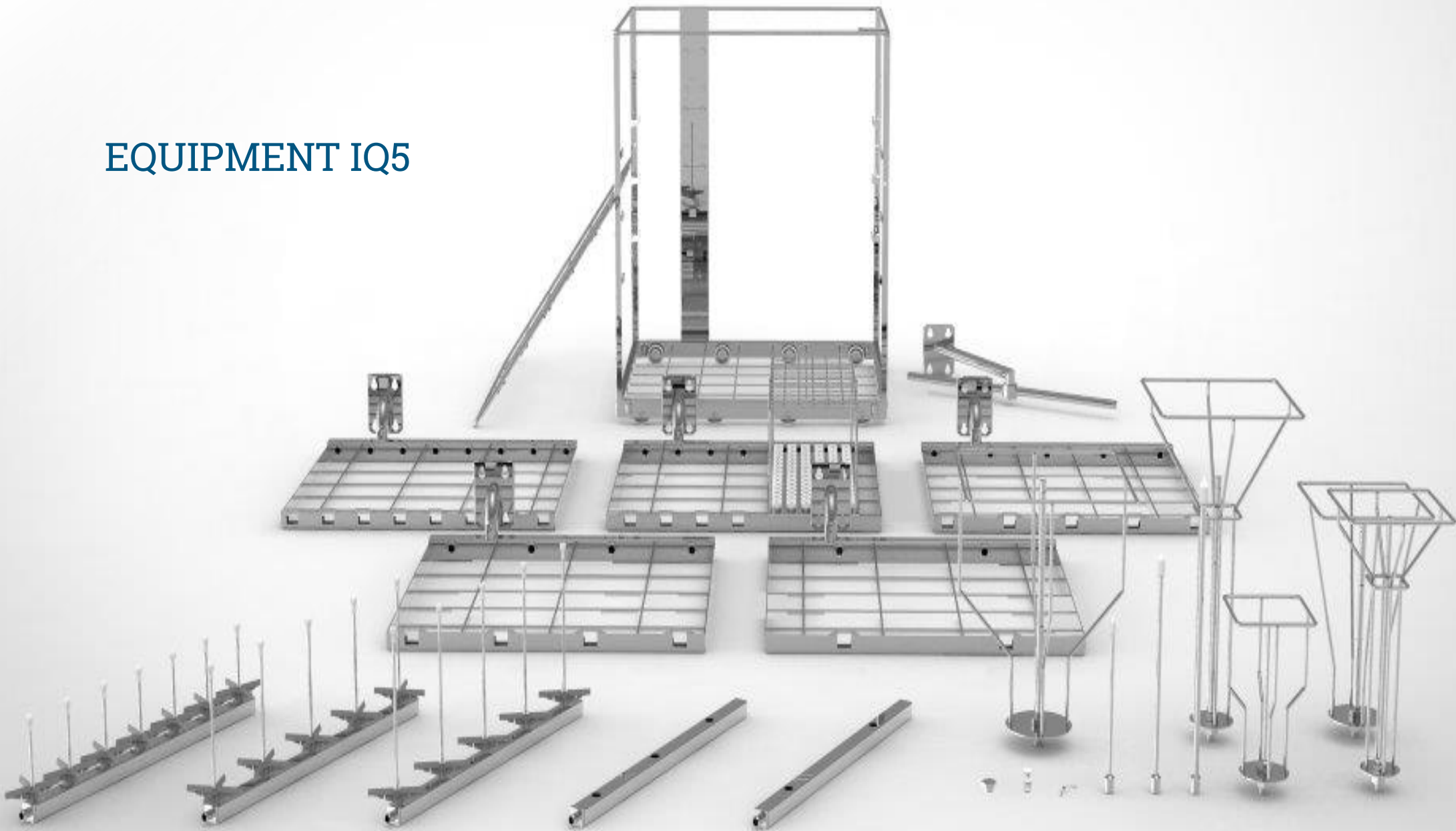
Level shelf incl. spray arm. For cleaning miscellaneous items on upper levels.  
ref. 2908456

## IQ5 MODULES FOR BASE RACK

The modules for base rack are designed for the general or specific need. The idea of using modules for base rack is to avoid heavy lifting and thus ensure the best possible ergonomic work environment for the user. The module system also creates a great flexibility in terms of changing to a different load of goods. Furthermore the module system ensures that you can easily adapt to the future if you should have a change in the laboratory routine.

The pipette module is designed to be placed in the lowest position. This is due to the long pipettes that demands a lot of height. All the other modules can be placed in any position that suits the using staff best.

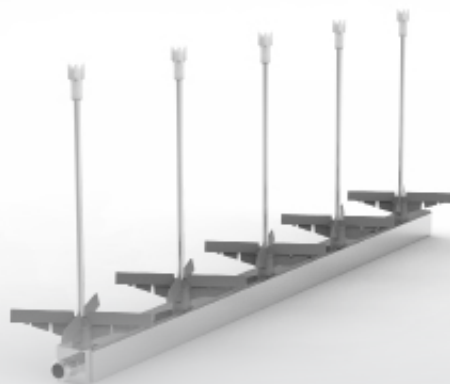
# EQUIPMENT IQ5





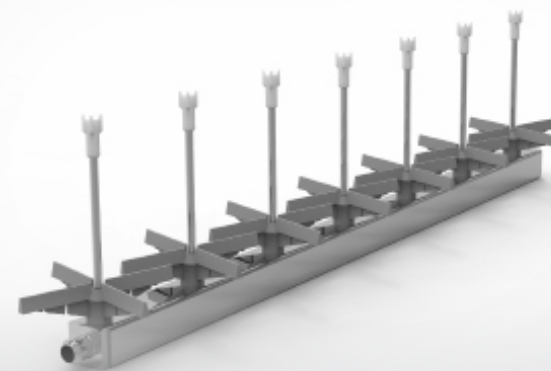
**DISTRIBUTOR UNIT**  
5 x 200 mm. fixed injectors

Distributor unit with 5 x 200 mm.  
fixed injectors. Injector position  
spread: 100 mm.  
ref. 2908637



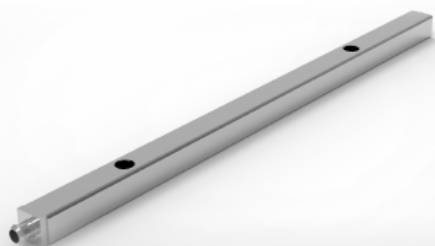
**DISTRIBUTOR UNIT**  
5 x 160 mm. fixed injectors

Distributor unit with 5 x 160 mm.  
fixed injectors. Injector position  
spread: 100 mm.  
ref. 2908635



**DISTRIBUTOR UNIT**  
7 x 100 mm. fixed injectors

Distributor unit with 7 x 100 mm.  
fixed injectors. Injector position  
spread: 68 mm.  
ref. 2908634



**DISTRIBUTOR UNIT**  
2 x threaded connections

Distributor unit with 2 x threaded connections (excl. injectors).  
Injector position spread: 255 mm.  
ref. 2908359



**DISTRIBUTOR UNIT**  
3 x threaded connections

Distributor unit with 3 x threaded connections (excl. injectors).  
Injector position spread: 150 mm.  
ref. 2908358

## IQ5 DISTRIBUTORS

The distributors are designed to give optimum flexibility. It comes in two types. Either with fixed spikes or with threaded connections for holders. This gives the possibility to optimize the flexibility. The rack or module can be equipped with both large systems for large volume flasks and at the same time have other distributors with a lot of spikes for small glassware.

The flexibility makes the most obvious appearance when you need to adapt for a different lot of goods. Unlike other racks you only change or apply one or maybe two distributors and your interior rack design changes completely. This procedure is easily done and without heavy lifting of any kind. Furthermore the laboratory saves a lot of storage space, as the rack design is so flexible. Thus you only need one rack and a few extra distributors to be able to accommodate a great variety of laboratory glassware and other equipment.

## IQ5 SUPPORT FOR OTHER ACCESSORIES

The jet spikes from KEN HYGIENE SYSTEMS are always delivered with nozzles. These nozzles serves several purposes. Among other purposes it serves to ensure that the water spreads correctly. Do to continuance testing our R&D has developed a new nozzle that performs the perfect spread of water and also contributes with a support of mechanical power to the spray of water that contributes to the best cleaning result.

The nozzle also helps protect the glassware to be damaged. The spikes are made of stainless steel and the nozzle then shields the glassware from the steel. The nozzle is also designed in a way that creates space between the spike and the glass.



NOZZLE

Nozzle for Ø4 injectors (threaded).  
ref. 2900897



NOZZLE

Nozzle for pipettes.  
ref. 2900913



JET SPIKES Ø5

Jet spikes Ø5 x 200 mm. for threaded units. Nozzle (tip) Ø8. ref. 8300105



JET SPIKES Ø6

Jet spikes Ø6 x 270 mm. for threaded units. Nozzle (tip) Ø10. ref. 8300106



JET SPIKES Ø8

Jet spikes Ø8 x 360 mm. for threaded units. Nozzle (tip) Ø13. ref. 8300107



SUPPORT FOR FLASKS  
500-1.000 ml

Support for flasks for threaded units. For e.g. Erlenmeyer 1.000 ml, Blue Cap 500-1.000 ml.  
ref. 8300305



SUPPORT FOR FLASKS  
5.000-10.000 ml.

Support for flasks for threaded units. For large flasks 5.000 ml - 10.000 ml.  
ref. 8300310



SUPPORT FOR FLASKS  
5.000 ml.

Support for flasks for threaded units. For volumetric flasks 5.000 ml.  
ref. 8300311



SUPPORT FOR FLASKS  
500-2.000 ml.

Support for flasks for threaded units. For volumetric flasks 500 ml. - 2.000 ml units.  
ref. 8300312



SUPPORT FOR FLASKS  
2.000-5.000 ml.

Support for flasks for threaded units  
For Erlenmeyer 2.000 - 5.0000 ml.  
ref. 8300313

## IQ5 SUPPORT FOR FLASKS

If there is no space in between the glass and the spike there is a risk of clogging the spike. The design of the KEN Nozzle eliminates that risk.

KEN HYGIENE SYSTEMS has for several decades designed holders for laboratory glassware. This has been designed taking effectivity, safety and flexibility into account. The holder systems are fitted with the threaded connection to the threaded distributors. The new system for the IQ series is designed with the same threaded piece as our previous models, which means that your existing KEN holders can be placed directly in the new IQ machines. This is also the case with customized holder systems from KEN HYGIENE SYSTEMS .





## IQ5 - OTHER ACCESSORIES

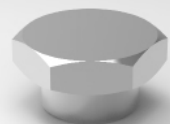
KEN is always developing and adapting to the world surrounding us. Therefore we also have a continuous development of accessories. To the right you will find the most common and lightly to be of your interest.

We strive to always be up to date with our product program and even though we are pioneering the market of glassware washers with the IQ series, we are still designing our accessories to be compatible with existing holders and spikes. If in any doubt, please do not hesitate to seek out counseling and contact our experts at KEN Life Science.

1



2



3



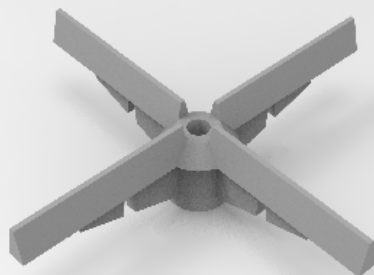
4



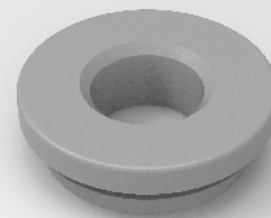
5



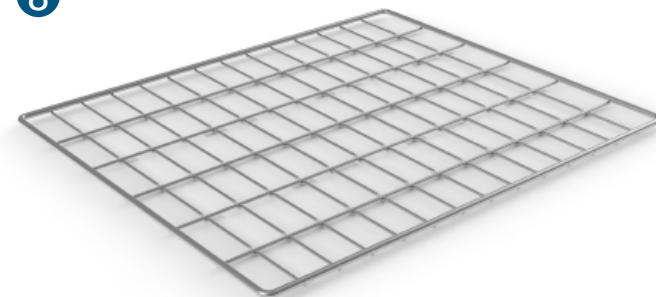
6



7



8



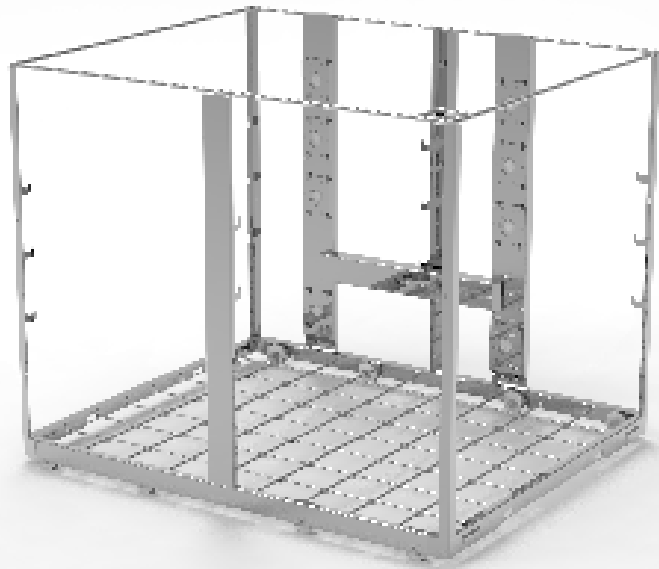
9



1: Plug for closing unused injector unit positions. ref. 2901020  
 2: Plug for closing unused threaded connections on units. ref. 8300091  
 3: Height adjustment spring for glassware supports. ref. 2900563

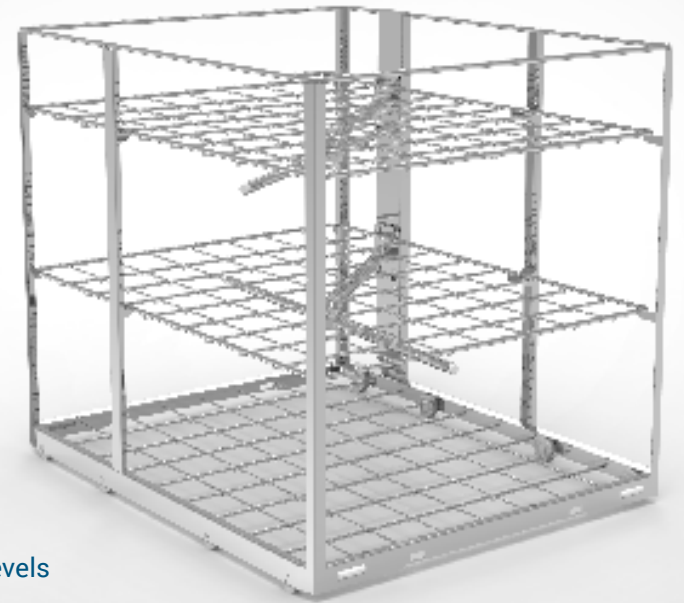
4: Cold touch handle for racks. ref. 2908193  
 5: Hook for loading & unloading racks from machine ref. 2908556  
 6: Glassware support for Ø4 injectors. ref. 7608938

7: Grommet for connecting injector units on modules. ref. 2900811  
 8: Replacement level-shelf for racks with tighter grid. ref. 2908469  
 9: Washing arm for rack. ref. 2908015



**BASE GLASSWARE RACK**

Base glassware rack, up to 3 levels, excl. modules  
ref. 2918343



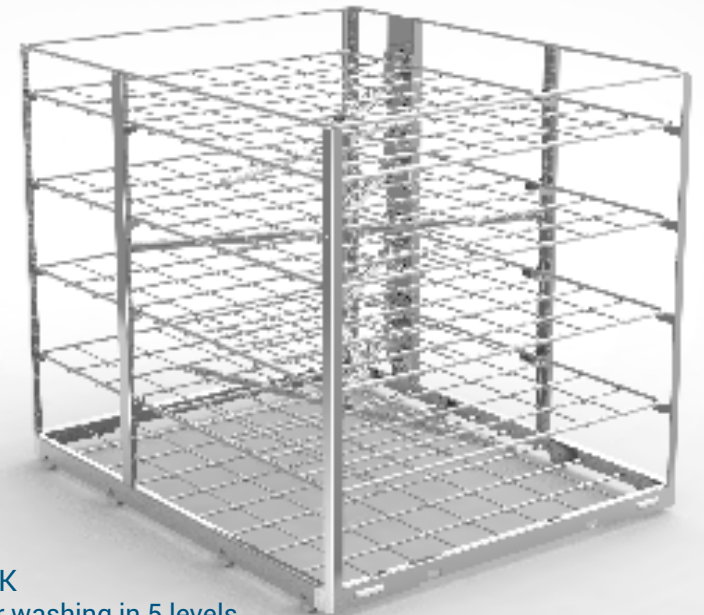
**FLEXIBLE RACK**

For washing in 3 levels  
ref. 2918464



**FLEXIBLE RACK**

Flexible Rack for washing in 4 levels  
ref. 2918169



**FLEXIBLE RACK**

Flexible Rack for washing in 5 levels  
ref. 2918161



## IQ6 LOADING RACKS

The Loading rack for KEN IQ6 LAB is designed in stainless steel. It is fitted with a top load indicator, so that the glassware is no damaged when it is pushed into the washing chamber. It is aligned with 8 wheels that ensures a smooth, silent and safe transportation in and out of the washing chamber.

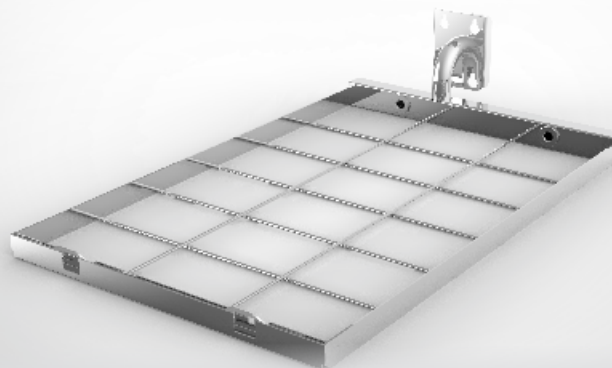
It is designed to wash up to 3 levels in 4 different positions. Each level is split in two parts which allows for washing in up to 4 levels. Both levels has internal washing and drying. The shelves can be equipped with modules, distributors and injectors that you will find on the next pages. Every injector is connected not only to the internal water pump system for washing but also to the hot air blower motor, so every piece of glassware or equipment will be washed and dried as well form the inside as the outside.

## IQ6 MODULES FOR BASE RACK

The modules for base rack are designed for the general or specific need. The idea of using modules for base rack is to avoid heavy lifting and thus ensure the best possible ergonomic work environment for the user. The module system also creates a great flexibility in terms of changing to a different load of goods. Furthermore the module system ensures that you can easily adapt to the future if you should have a change in the laboratory routine.

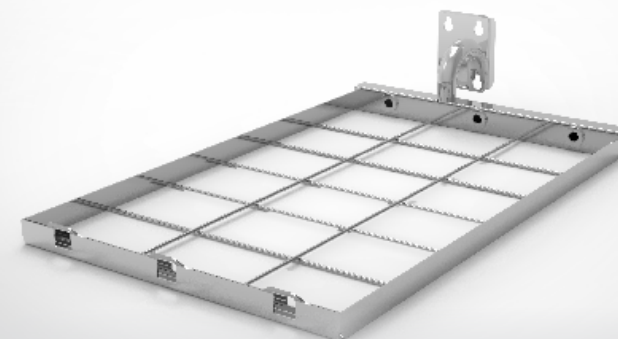
The pipette module is designed to be placed in the lowest position. This is due to the long pipettes that demands a lot of height. All the other modules can be placed in any position that suits the using staff best.

The modules for IQ6 is  $\frac{1}{2}$  with of the rack. In this way one side of the rack can be equipped with 2 or 3 modules while the other side washes higher glassware that needs more space in the height. This allows you to use the same rack for all the different glassware in your laboratory. Thus the most flexible solution possible.



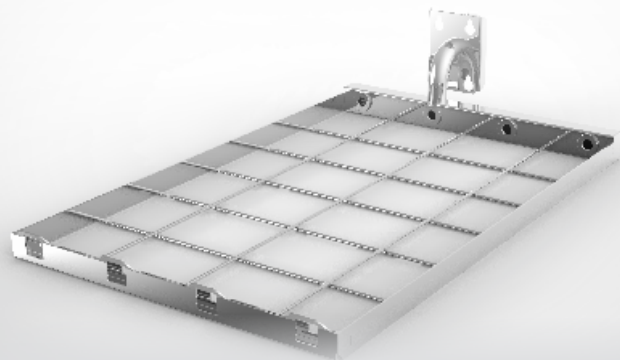
MODULE  
2 DISTRIBUTORS

Glassware module for  
2 injector units. Unit position  
spread: 208 mm.  
ref. 2918348



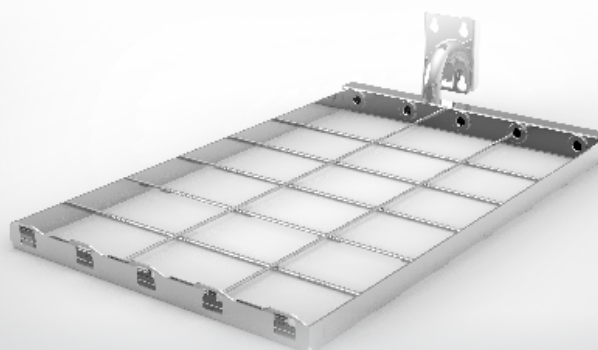
MODULE  
3 DISTRIBUTORS

Glassware module for  
3 injector units. Unit position  
spread: 130 mm.  
ref. 2918347



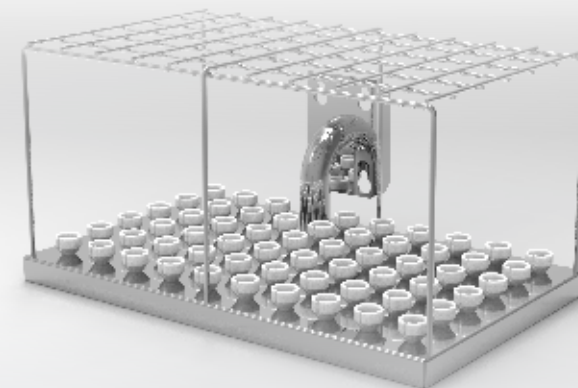
MODULE  
4 DISTRIBUTORS

Glassware module for  
4 injector units. Unit position  
spread: 104 mm.  
ref. 2918345



MODULE  
5 DISTRIBUTORS

Glassware module for  
5 injector units. Unit position  
spread: 80 mm.  
ref. 2918344



MODULE  
PIPETTES 59 PCS

Glassware module for pipettes (59  
pcs.). Pipette length min. 160 mm.,  
max. 630 mm.  
ref. 2918346



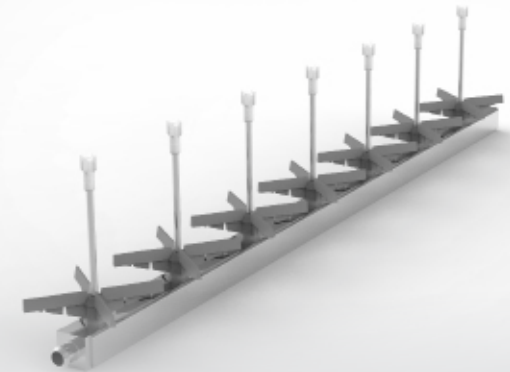
**DISTRIBUTOR UNIT**  
6 x 200 mm. fixed injectors

Distributor unit with 6 x 200 mm.  
fixed injectors. Injector position  
spread: 105 mm.  
ref. 2918637



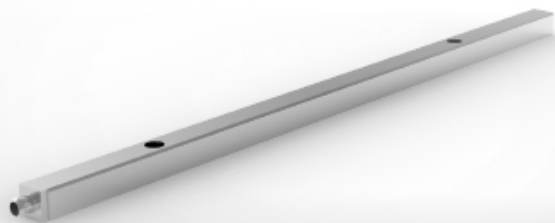
**DISTRIBUTOR UNIT**  
6 x 160 mm. fixed injectors

Distributor unit with 6 x 160 mm.  
fixed injectors. Injector position  
spread: 105 mm.  
ref. 2918635



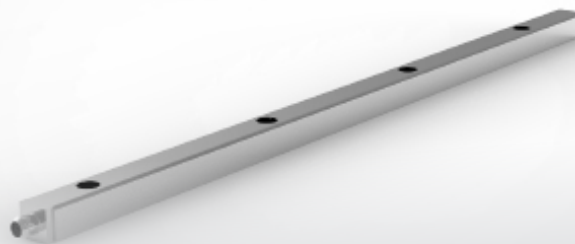
**DISTRIBUTOR UNIT**  
7 x 100 mm. fixed injectors

Distributor unit with 7 x 100 mm.  
fixed injectors. Injector position  
spread: 81 mm.  
ref. 2918634



**DISTRIBUTOR UNIT**  
2 x threaded connections

Distributor unit with 2 x threaded connections (excl. injectors).  
Injector position spread: 330 mm.  
ref. 2918359



**DISTRIBUTOR UNIT**  
4 x threaded connections

Distributor unit with 4 x threaded connections (excl. injectors).  
Injector position spread: 150 mm.  
ref. 2918358

## IQ6 DISTRIBUTORS

The distributors are designed to give optimum flexibility. It comes in two types. Either with fixed spikes or with threaded connections for holders. This gives the possibility to optimize the flexibility. The rack or module can be equipped with both large systems for large volume flasks and at the same time have other distributors with a lot of spikes for small glassware.

The flexibility makes the most obvious appearance when you need to adapt for a different lot of goods. Unlike other racks you only change or apply one or maybe two distributors and your interior rack design changes completely. This procedure is easily done and without heavy lifting of any kind. Furthermore the laboratory saves a lot of storage space, as the rack design is so flexible. Thus you only need one rack and a few extra distributors to be able to accommodate a great variety of laboratory glassware and other equipment.



## IQ6 SUPPORT FOR OTHER ACCESSORIES

The jet spikes from KEN HYGIENE SYSTEMS are always delivered with nozzles. These nozzles serve several purposes. Among other purposes it serves to ensure that the water spreads correctly. Do to continuance testing our R&D has developed a new nozzle that performs the perfect spread of water and also contributes with a support of mechanical power to the spray of water that contributes to the best cleaning result.

The nozzle also helps protect the glassware to be damaged. The spikes are made of stainless steel and the nozzle then shields the glassware from the steel. The nozzle is also designed in a way that creates space between the spike and the glass.



NOZZLE

Nozzle for Ø4 injectors (threaded).  
ref. 2900897



NOZZLE

Nozzle for pipettes.  
ref. 2900913



JET SPIKES Ø5

Jet spikes Ø5 x 200 mm. for threaded units. Nozzle (tip) Ø8. ref. 8300105



JET SPIKES Ø6

Jet spikes Ø6 x 270 mm. for threaded units. Nozzle (tip) Ø10. ref. 8300106



JET SPIKES Ø8

Jet spikes Ø8 x 360 mm. for threaded units. Nozzle (tip) Ø13. ref. 8300107



GLASSWARE ADAPTER  
500-1.000 ml.

Glassware adapter for threaded units. For e.g. Erlenmeyer 1.000 ml., Blue Cap 500-1.000 ml.  
ref. 8300305



GLASSWARE ADAPTER  
5.000-10.000 ml.

Glassware adapter for threaded units. For large flasks 5.000 ml. - 10.000 ml.  
ref. 8300310



GLASSWARE ADAPTER  
5.000 ml.

Glassware adapter for threaded units. For volumetric flasks 5.000 ml.  
ref. 8300311



GLASSWARE ADAPTER  
500-2.000 ml.

Glassware adapter for threaded  
For volumetric flasks 500 ml. -  
2.000 ml. units.  
ref. 8300312



GLASSWARE ADAPTER  
2.000-5.000 ml

Glassware adapter for threaded For  
Erlenmeyer 2.000 - 5.0000 ml.  
ref. 8300313

## IQ6 SUPPORT FOR FLASKS

If there is no space in between the glass and the spike there is a risk of clogging the spike. The design of the KEN Nozzle eliminates that risk.

KEN HYGIENE SYSTEMS has for several decades designed holders for laboratory glassware. This has been designed taking effectivity, safety and flexibility into account. The holder systems are fitted with the threaded connection to the threaded distributors. The new system for the IQ series is designed with the same threaded piece as our previous models, which means that your existing KEN holders can be placed directly in the new IQ machines. This is also the case with customized holder systems from KEN HYGIENE SYSTEMS .

## IQ6 - OTHER ACCESSORIES

KEN is always developing and adapting to the world surrounding us. Therefore we also have a continuous development of accessories. To the right you will find the most common and lightly to be of your interest.

We strive to always be up to date with our product program and even though we are pioneering the market of glassware washers with the IQ series, we are still designing our accessories to be compatible with existing holders and spikes. If in any doubt, please do not hesitate to seek out counseling and contact our experts at KEN Life Science.

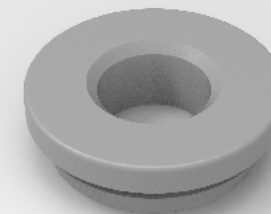
1



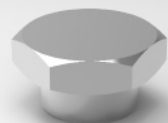
4



7



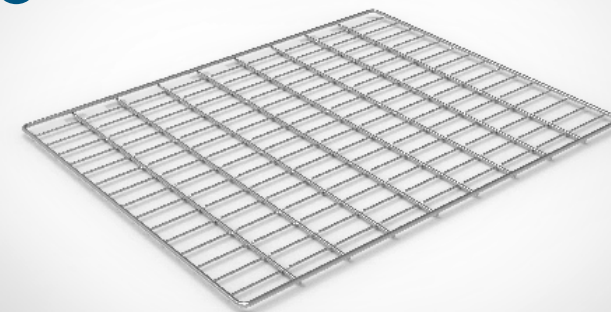
2



5



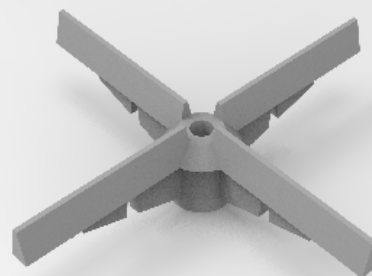
8



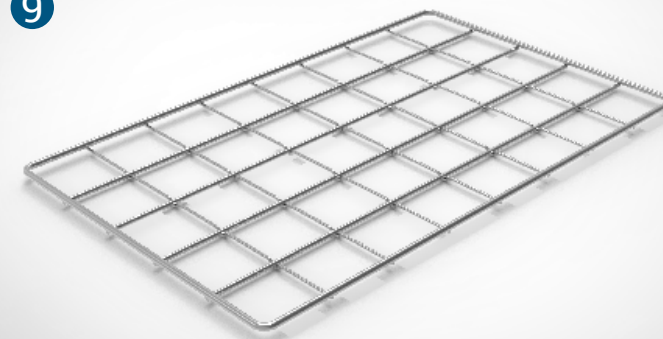
3



6



9



1: Plug for closing unused injector unit positions. ref. 2901020  
 2: Plug for closing unused threaded connections on units. ref. 8300091  
 3: Height adjustment spring for glassware supports. ref. 2900563

4: Cold touch handle for racks. ref. 2901015  
 5: Hook for loading & unloading racks from machine ref. 2908556  
 6: Glassware support for Ø4 injectors. ref. 7608938

7: Grommet for connecting injector units on modules. ref. 2900811  
 8: Replacement level-shelf for racks with tighter grid. ref. 2918469  
 9: Rack shelf for a half level. For different loading heights on each rack half. ref. 7609658



HEIGHT ADJUSTABLE  
TROLLEY

Height adjustable Trolley IQ5 and IQ6.  
IQ5: ref. 7610257  
IQ6: ref. 7609529



MANUAL TROLLEY

Manual Trolley IQ5.  
ref. 2908117



MANUAL TROLLEY

Manual Trolley IQ6.  
ref. 2918117

## TROLLEYS FOR EVERY DEMAND

### Manual loading trolley - Height adjustable trolley

KEN HYGIENE SYSTEMS has a very wide range of logistics solutions. It extends from the simple to the fully automated logistics solution, with robotics and related buffer stations, monitoring screens and terminal tablets.

The manual transport trolley. This is connected to the machine in front of the door and locks itself firmly to the machine. It can be loosened and released with a single hand and is very user-friendly. .

The electronically adjustable transport trolley. This works more or less the same way as the manual trolley, but can be adjusted in height. It has several pre-programmed fix heights or can be easily and quickly programmed on site. The height adjustment is electronic and highly ergonomic.





## TECHNICAL INFORMATION

Life Science dimensional sketches.  
Scan the QR code.

### **KEN HYGIENE SYSTEMS A/S**

Bøgebjergvej 60

DK-5672 Broby

Tlf. +45 62 63 10 91

Fax +45 62 63 16 07

ken@ken.dk

www.ken.dk

The logo for KEN Hygiene Systems, featuring the word "KEN" in a stylized blue font with a white outline, followed by "HYGIENE SYSTEMS" in a smaller, solid blue font. The background of the entire page is a composite image showing a close-up of a cleanroom floor with a grid pattern and a person in a white lab coat, hairnet, and face mask, wearing gloves and holding a tablet.

**KEN** HYGIENE SYSTEMS®

INTELLIGENT DISINFECTION

# Accessories

for KEN IQ Life Science Series

Clean, Lean & Green